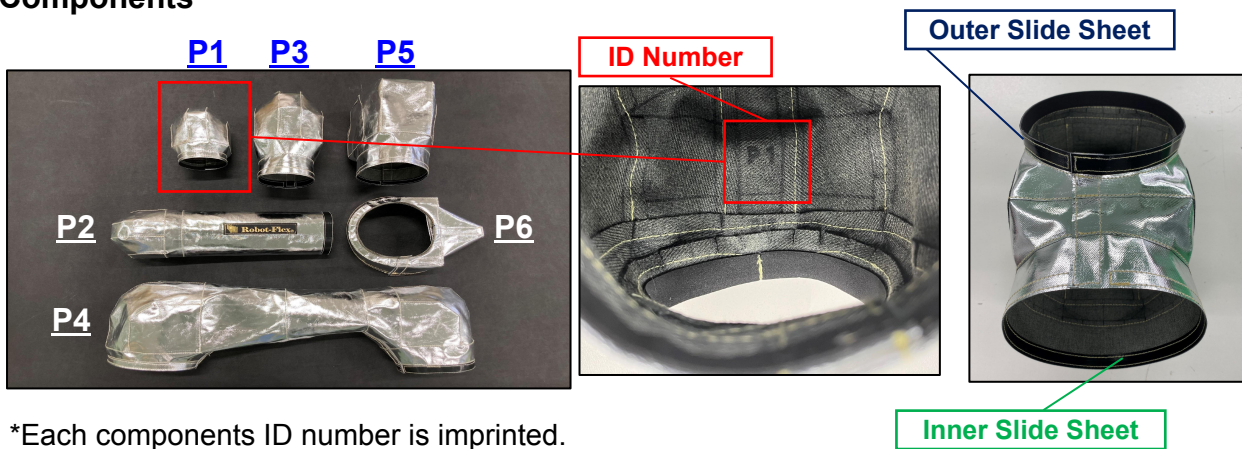


Thank you for choosing NABELL Robot-Flex. The below, will help guide you in installing the cover properly.

Installation Precautions

- The images of the products shown are for reference only. Your model may vary slightly
- Remove any peripheral devices before installing the cover to minimize any risk of damage.
- Verify the robot is at rest and powered off before installing your Robot-Flex cover.
- Installation and removal should be performed slowly and carefully.
- Excessive force may cause damage to the robot, cover and/or cause personal injury.
- After installing the cover, check for gaps at the joined areas. Adjust, if necessary.
- Manually move robot, about all axis of rotation to insure smooth movement, before powering on

1. Components



*Each components ID number is imprinted.

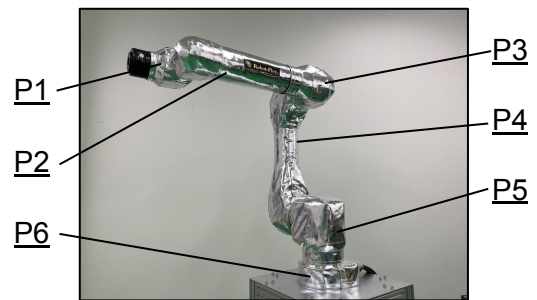
2. Installation Procedures

① Robot Position

- Position the robot and each arm where it is convenient to work with.
- Assemble components in order using the images as a reference.

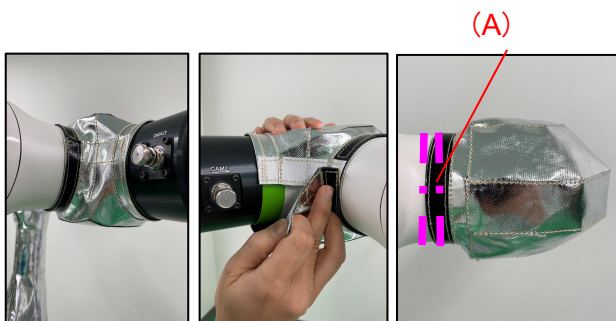
<Component mounting order>

- P1→P2→P6→P5→P4→P3 (note: P3 is last)



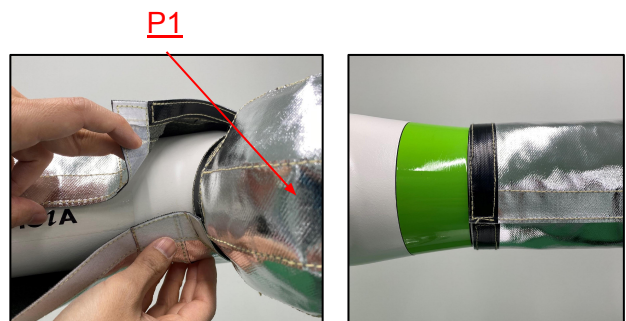
② Installing P1 (First)

- Detach Velcro, mount the cover and reattach Velcro tightly.
- Make sure to align the outer slide sheet, straight. (A) (Do the same for all others)



③ Installing P2

- Detach Velcro, mount the cover and reattach Velcro tightly.
- Make sure to align the inner slide sheet over the outer slide sheet of P1.



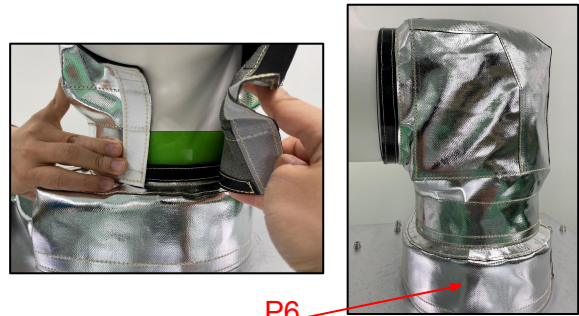
④ Installing P6

- Detach Velcro, mount the cover and reattach Velcro tightly.



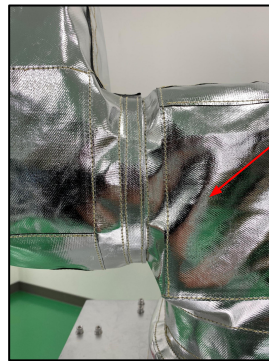
⑤ Installing P5

- Detach Velcro, mount the cover and reattach Velcro tightly.
- Make sure to align the inner slide sheet over the outer slide sheet of P6.



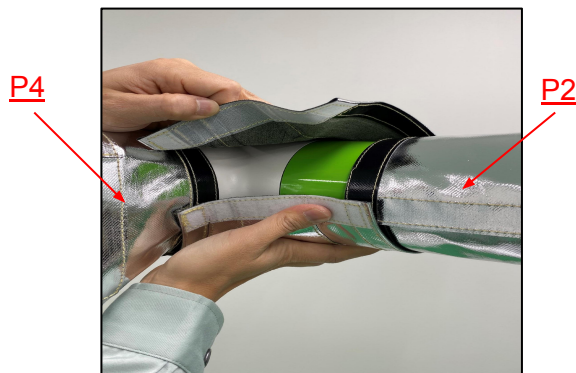
⑥ Installing P4

- Detach Velcro, mount the cover and reattach Velcro tightly.
- Make sure to align the inner slide sheet over the outer slide sheet of P5.



⑦ Installing P3 (Last)

- Make sure to align the inner slide sheet over the outer slide sheet of P2 and P4.



Operational Check

- Slowly move arms by hand while checking for binds and gaps.
- Adjust cover, joint attachments and alignment as necessary before powering on.

Contact Information



株式会社 ナベル
NABELL CORPORATION
<https://www.bellows.co.jp>
E-mail:nabell@bellows.co.jp

Headquarters
7-2-3 Yumegaoka, Iga, Mie, 518-0873
TEL: +81-595-21-5060
NABELL USA CORPORATION
208 Charter St Albemarle, NC 28001 U.S.A
TEL:+1-704-986-2455